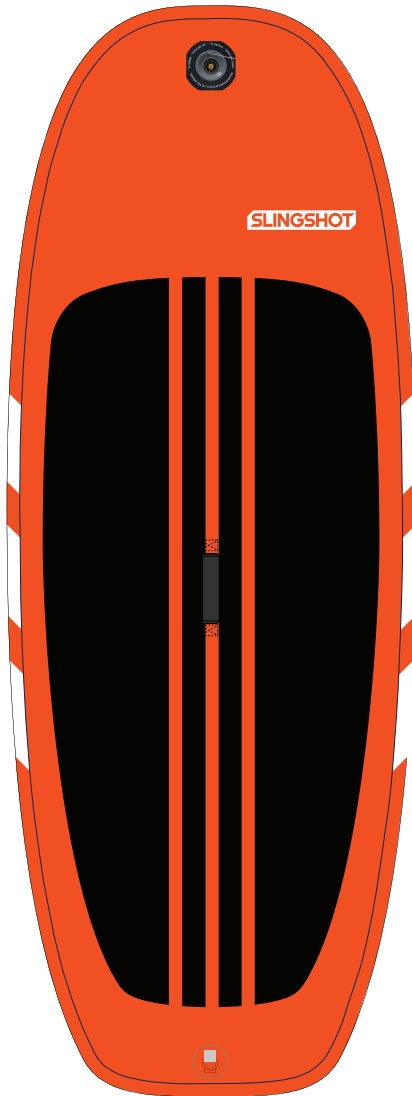


SLINGSHOT



TRACKER V1
QUICK START GUIDE

TRACKER V1

Dear Customer,
Congratulations on your purchase of a Slingshot Stand Up Paddleboard. We are committed to building quality products that are fun to ride. Please take a moment to read this booklet, as it will provide you with important information on the care and maintenance of your board, as well as how to set up your board for paddling. Please contact customer service with any questions you may have. For product support videos, visit www.slingshotsports.com/Sup-Product-Support.
E-mail us: info@slingshotsports.com
Call us: 509.427.4950



WARNING: This model is designed to be used in flat waters (lake, rivers, sea shore...) in standing and seated position.



There is a risk of serious injury or death from drowning. Paddle sports can be very dangerous and physically demanding. The user of this product acknowledges, understands, and assumes the risks involved in paddle sports. Observe the following safety standards and safe operating practices whenever using this product.

- Always wear an approved personal flotation device.
- Wear board vests, which are not as low in the back as a marine PFD.
- Do not exceed maximum weight capacity. Regardless of the number of persons on board, the total weight of persons and equipment must not exceed maximum weight capacity.
- Do not operate the board under the influence of drugs or alcohol.
- Wear a helmet when appropriate.
- Do not paddle alone.
- Children must be supervised by a responsible adult at all times.
- Dress appropriately for weather and marine conditions; cold water and cold weather can result in hypothermia.
- Beware of offshore winds and currents as they can take you out to sea.
- Check weather forecasts and obtain knowledge of the marine environment and weather conditions prior to voyage.
- Do not exceed your paddling ability; be aware of your limitations.
- Check your equipment prior to each use for signs of wear, leaks, or failure.
- Tie a leash to your paddle when appropriate.

- Always inform someone of your paddling route, the time and place of your departure and your intended time and place of arrival.
- Always carry identification.
- Do not paddle in flood conditions.
- Make sure you are able to exit the craft if necessary.
- Scout unfamiliar waters; portage where appropriate.
- Do not use D-Ring for towing.
- Do not use the Valve Wrench for deflation purposes.

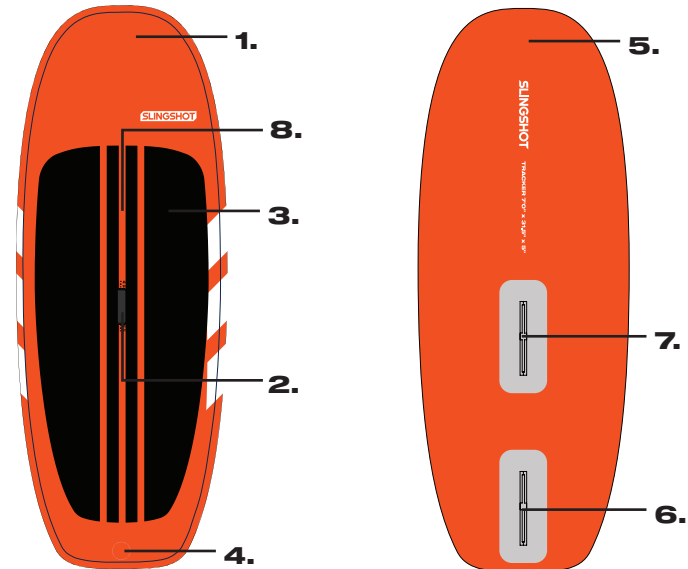
1. H3 Inflate Valve
2. Soft Handle
3. EVA pad
4. D-Ring for Surf Leash Attachment
5. D-Ring for Tethering
6. Fin Box
7. sUPWINDER fin box
8. Threaded insert for single bolt windsurf universal

DIMENSIONS:

Length: 7'0"

Width: 31.5"

Thickness: 5"



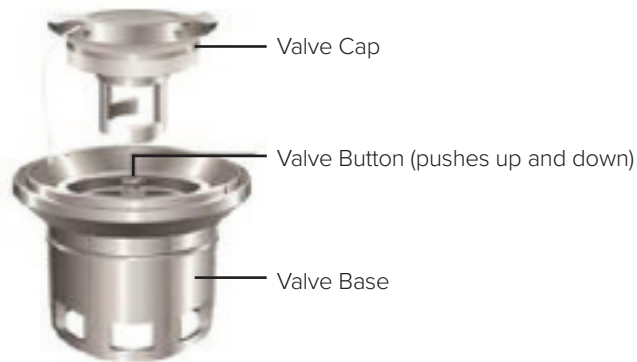
PACKAGE INCLUDES:

Board, FCS II 9" fin, sUPWINDER Keel Fin, Paddle, Pump, Backpack and Repair Kit

TRACKER V1

ASSEMBLY INSTRUCTIONS / INFLATION / DEFLATION

Inflate your board with the pump that came with your board or any pump designed for inflatable boats and other low pressure inflatables. These types of pumps will have a hose and adapters to fit the valve on this board. Choose a smooth and clean surface to unfold your board on.



INFLATION (SEE DRAWING ABOVE)

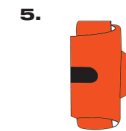
Remove the valve cover. Ensure the valve button is in the up position. This will ensure air will not rush out when you remove the pump hose. Attach the pump hose and twist it tight in the valve. Pump your board to the proper pressure. Your pump is equipped with a one-way valve feature that aids in pumping your board to full pressure. Start pumping with the valve plug inserted so you are pumping on the up and downstroke. When pumping becomes difficult, remove the valve plug and continue. Recommended air pressure is 15-18 PSI. Do not exceed 18PSI (1 bar, 1240 mbar). Once your board is inflated, remove the hose and reattach the valve cap. Twist it tight to ensure a proper seal.

DEFLATION (SEE DRAWING ABOVE)

Remove the valve cap. Press in on the valve button until it locks in the down position. You can then push out the air and roll your board for storage.



If you leave your board exposed to the hot sun, check the pressure and deflate it slightly. Otherwise the board may become over inflated and stretch the material. The ambient temperature affects the tube's internal pressure: a variation of 1° C / 1.8° F causes a variation of the pressure in the tube of +/- mBar (0.06 psi)



DETACHABLE FIN:

This Slingshot SUP comes with a detachable rear fin that allows the board to track in a straight line. It also comes with a removable sUPWINDER center fin that allows the rider to stay upwind when using it with a Slingswing. Both fins are removable and can be installed anytime whether the board is inflated or deflated.

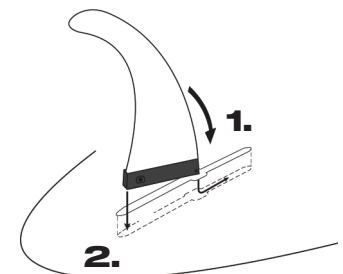
REAR FIN:

1. Insert the fin into the box slot and slide backwards to the desired position. Adjusting the fin forwards or backwards will depend on the personal preference.
2. Carefully press on the top of the fin to insert the rear end into the fin box.



CENTER SUPWINDER FIN:

1. Insert the supplied square nut into the forward track and slide it to the back.
2. Insert front of sUPWINDER fin into the slot box and slide it forward.
3. Align the hole in the tab on the rear of the sUPWINDER with track nut and use the supplied thumb twist bolt to attach the rear tab of the sUPWINDER to the track nut
4. Windsurf Universal Attachment: Remove T-nut from base of single bolt windsurf Universal. Leave disc washer attached. Screw universal into threaded insert in board clockwise until snug.



TRACKER V1

MAINTENANCE

1. To deflate the board, remove the valve cap from the valve in the board.
2. Clean and check the board as well as all the accessories. Make sure the board is completely dry before putting it away. Make sure that no sand or gravel remains inside the bag - this could result in abrasion or even punctures while storing the board.
3. Rinse your board after use in salt water to avoid corrosion.
4. Roll it up from the opposite end of the valves (so remaining air can escape from the valves).
5. When storing your inflatable, keep it in a clean and dry place.



Whenever you take your board out of the water and deflate it, allow time for it to air out and dry. Neither the skin/hull or the inside chambers will suffer from water damage, but stagnant water could cause mildew and foul odor.

MAINTENANCE

1. Check that the board is fully deflated and lies flat.
2. Prepare a round patch no less than three inches or seven centimeters in diameter.
3. Clean the patch and the area surrounding the leak with alcohol.
4. To contain excess glue, use masking tape to tape off the area around the patch.
5. Apply a generous amount of glue to the surface of both the iSUP and patch. Apply pressure to secure the patch to the iSUP.
6. Work out all air bubbles to assure the patch has a clean bond.
7. Wait 24 hours before re-inflating.



- Perform all of your repairs in a well-ventilated area.
- Avoid inhaling glue vapors.
- Avoid contact with the skin or the eyes.
- Keep all repair materials (glue, solvents, etc.) away from the reach of children.
- The repairs on the welds must not be glued. Only the manufacturer of the board can perform repairs on the welds themselves.

WARRANTY

Slingshot warrants (legal warranty) to the original purchaser only, and from date of purchase, that the product is free from defects. The warranty applies only when this product is used for normal recreational purposes. Check with your local Slingshot dealer for details on the length of this warranty, which varies for different countries. The warranty does not cover any puncture, cut or abrasion sustained in normal use or damage from unreasonable uses or improper storage.

If any product is found to be defective, the owner may return it to the store where it was purchased along the original sales receipt.

After inspection of any product found defective, Slingshot shall either repair or replace the defective part or item as deemed necessary by Slingshot. Slingshot shall not be held liable for incidental and consequential damages. There are no warranties which extend beyond the description of the face hereof. This warranty is in lieu of all other warranties. This warranty gives you specific legal rights and you may also have other rights, which may vary, from country to country.

THE MAIN LIMITATIONS TO THE APPLICATION OF THIS WARRANTY ARE THE FOLLOWING:

- The item must not be modified and/or fitted with a motor in excess of that allowed by the manufacturer or used in any activities outside normal recreational use (such as races, rental, or commercial usage).
- Used in excess of the manufacturers recommended maximum load capacity.
- Pressure recommendations, assembly / disassembly and handling procedures must be strictly observed.
- The maintenance and storage procedures must not be neglected.
- This warranty does not cover parts and accessories not supplied or recommended by the manufacturer or defects resulting from the installation of such equipment on their products.

SLINGSHOT SUPPORT

FOR FURTHER INSTRUCTIONS GO TO:
WWW.SLINGSHOTSPORTS.COM

CONTACT US:
INFO@SLINGSHOTSPORTS.COM

RIDER SERVICE LINE IN THE US:
[877.775.4832](tel:877.775.4832)

INTERNATIONAL PHONE:
[509.427.4950](tel:509.427.4950)

LOG ON TO:
SLINGSHOTSPORTS.COM/REGISTRATION TO
REGISTER YOUR PRODUCT. RECEIVE SERVICE
GUARANTEES, AND ACCESS TO YOUR OWN
PERSONAL RIDER HOTLINE PROFESSIONAL.

SLINGSHOT

